

# OUR HIMS SHEET #37

## NEWS AND INFORMATION FOR MEMBERS OF HAYLING ISLAND MEN'S SHED November 2022



### Editorial.

This newsletter builds on the thread started by Tony in Sheet 36, our identity, who we are and what we want to be. He penned, in his normal understated way, a tribute to the late Alan Ball. Part of that tribute said

*Alan got involved in many (other) ways. We owe the shed logo to his original designs, he was active in trying to get us a home at the British Legion, he set up the Facebook pages and he became our quizmaster. Back in 2017, we held a fund-raising quiz night at Seacourt and much to our surprise and delight he presented the winning team with a wooden goblet as a trophy.*

*Sadly, in March 2018 Alan passed away and was never to see the completion of our dream.*

*However, having been a member of the winning team at that first quiz I had kept the goblet safely at home and the decision was taken to keep it as a perpetual trophy for future quizzes in Alan's memory.*

I, Nik, did not know Alan but through Tony's writing, I see a founder member who wanted our Shed to succeed for all members and grow into a community that future generations can enjoy. I suggest we all wish to build unity in our Shed, a community of friends we can rely on and who can rely on us. The Committee have started that journey by suggesting that we do not have any different parts of the Shed, Lounge and Workshop, but just **The Shed**. The Shed is our identity whether you are using a saw, a paintbrush or a teacup.

The Shed has evolved, and it will continue to evolve as new members join, with new ideas, talents and skills. New committees will form and trustees will come and go, but, the shed should continue for all the reasons expressed in the next article and because of all the hard work that has been done by committees past and present.

This is a personal note from our Chairman of Trustees who writes as both a member of HIMS and as an ambassador of the UK Men's Shed Association.

**Whatever activities are pursued, the Shed will be more than a building - it will become a fellowship of men sharing and supporting each other.**

*(a quote from the Horsham shed)*

I'm sure we have all made decisions in our lives based on what we believe in, or what we want to do or achieve, then look back at the success or failure of those decisions.

So it was with me when I decided to get involved in Men's Sheds. I looked at the where who, what, and why Men's Sheds started and have so successfully spread throughout the UK.

'Why' is a question I get asked by people outside of Men's Sheds and by those wishing to start a Shed in their community.

The message of why Men's Sheds exist is universal. **They are there mainly for retired men's mental health, physical health and general well-being. To combat the impact of loneliness and isolation;** they're about building social friendships, sharing skills and knowledge, and providing a space for men to connect, converse, create, have fun and enjoy a lot of laughter.

This is my and the UKMSA's answer to 'why' and one I believe in. I hope it will remind all members of HIMS why sheds started, and cause them to ask themselves 'Why did I join A Men's Shed?

As we come towards the end of 2022 and a full year of our Shed being open without the interruptions of Covid, I think it would be good if we looked forward to 2023 with a renewed sense of purpose which really does focus on why we exist.

Irrespective of the role one may have in a Shed, Trustee, Chair/vice Chair, Secretary, Treasurer, Committee member or just a member, we are all equal and all volunteer our time to help run the Shed

Irrespective of whether we want to make things, learn new skills, or do less physical activities, art, play cards, or just come and chat and have a cuppa, we are **one** Shed.

One size does fit all. Let us all remind ourselves of the decision why we decided to join a Men's Shed, our Shed, so we can look back, see what we have achieved, look to the future, work together and enjoy the success of it.

**Latest update from the previous Committee meeting. (MORE INFORMATION FROM THE PERSON WHOSE NAME IS IN BRACKETS)**

1. The Christmas party is on Thursday 15th December 2022 from 2 until 5 pm. Can Shedders who are attending please bring some edibles. We will be using the outstanding vouchers we have from M&S but they will not cover everything. Tea and coffee will be available. **(Caroline)**
2. Tony and Caroline opted Chris Dean on to the committee as Acting Vice Chairman. This post will be ratified at the next AGM. **(Tony)**
3. Membership audit. Caroline has received 45 out of a possible 93 membership forms, which is not a good response. Some of these were new members joining pro rata. If shedders have not sent their completed forms back please do so as soon as possible. We need to confirm how many paid-up members we have and contact the others on our list to see if they wish to stay. **(Tony and Caroline)**
4. Membership subs to be paid by 31st January 2023 please. **(Jim)**
5. Our bank balance stands at £16,800 and it has been a good year for donations.
6. We have a new defib on order which has cost £1088.41p **(Tony)**  
More information will be forthcoming on this soon.
7. We need volunteers for first aid training. Pete Edwards is arranging this training.  
Tony, Caroline and Chris have volunteered. There are 12 places available. **(Pete)**
8. Judy from the church has asked for the 4x4 timbers to be removed as someone is using these to climb onto the church's flat roof. **(Chris)**
9. Please can Shedders communicate with Tim, Caroline or Chris if they have not seen a shed member for a while as they will then investigate that persons well-being. **(Tim)**
10. AGM date to be confirmed by Caroline. (By Ed. I am told this is likely to be in February). **(Caroline)**

**Social events in progress**

**1** Quiz night. I am told this event was a great success but the shed has some hard work to do before the next one. Full report when I get it from the organisers.

## Project events in progress.

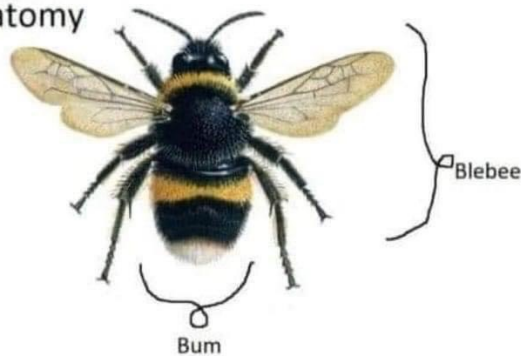
1. Ramp for easy door access. **(Completed)**
2. School Fence **(Barry)**
3. Christmas sleigh for photography props. **(Tony and Chris)**
4. Retro coffee table **(Completed)**



5. Whiteboard for Shed **(Completed)**

## In other trivia.

Bumblebee  
Anatomy



Nearly that time of year again, flatulence, sore heads and big, big bills



Pre internet chat room using  
An old version of windows...

